

FlexFit Exhaust Clamps



- Designed to connect flex to exhaust pipe.
- Strong, reliable yet lightweight and flexible.
- No need to separate pipes before clamping.
- Simply torque the socket cap screws for fast assembly.*
- Available for pipe sizes from Ø50 mm to Ø152.4 mm.
- Available in stainless or aluminized steel.

Design Features

Stepped strap accommodates flex for fast, easy and accurate installation.

Stepped bridging piece provides a 360° force distribution to help seal the joined components whilst still permitting variations in pipe/flex sizes.

Mechanical joints replace spot welds to insure against fatigue failures.

Cylindrical trunnions allow the screws to self-centre to optimise performance.

Socket cap screws provide a strong (12.9 grade) yet compact fastener mechanism.

All fasteners are high strength and coated to provide high corrosion resistance (>700 hours salt spray resistance.)**

Tolerates flex size variations of ±2mm on diameter and clamps can be re-tightened because there is no mechanical bridge or stop.

360° force distribution is achieved using a flexible stepped bridging piece.

* Maximum recommended torque = 25Nm.

** In accordance with BS 7479 (ASTM B117) ISO 3768.

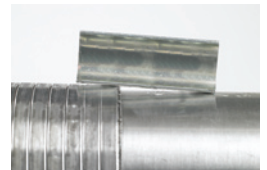
Copyright © 2007-2008
Dinex Clamps Ltd.



Strong clinching superior to spot welding



Dinex, low leakage fit



Competitor

Dinex no.

Aluminized	Inox	A mm	A Inch	B mm	B Inch
99250/T	99251/T	55.0	2 1/4	50.0	2
99257/T	99258/T	62.0	2 1/2	57.0	2 1/4
99264/T	99265/T	67.0	2 3/4	63.5	2 1/2
99270/T	99269/T	75.0	3	70.0	2 3/4
99276/T	99277/T	81.2	3 1/4	76.2	3
99289/T	99290/T	93.6	3 1/2	88.9	3 1/2
	99300/T	105.0	4	100.0	3 7/8
99302/T	99303/T	106.6	4	101.6	4
80871/T	99315/T	119.0	4 1/2	114.3	4 1/2
	99220/T	125.0	4 3/2	120.0	4 3/4
99327/T	99328/T	132.0	5	127.0	5
99352/T	99349/T	158.0	6	152.0	6

