

# Renault Premium - Competitor Comparison

## Dinex test program 64360

		Dinex		Competitor	
		Db	mbar	Db	mba
Mode 1	(Minimum speed - 25% load)	15,0	4,6	20,6	5,5
Mode 2	(75% rated speed - 50% load)	16,7	17,1	19,6	28,5
Mode 3	(75% rated speed - 100% load)	19,9	39,7	13,3	69,9
Mode 4	(Maximum power - at rated speed)	19,6	56,8	9,9	101,0
Mode 5	(Maximum load)	21,6	18,5	19,6	33,7

Db (noise reduction) lower than o/e means more noise. Mbar (back pressure) higher than o/e means more wear and tear on the engine and a higher use of fuel.

### Dinex

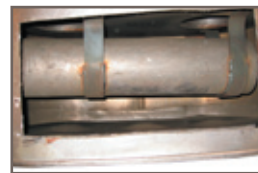


Internal silencer like OE.  
Bracket for mounting like OE.



Perforated inner baffles  
with biosil.

### Portuguese competitor



Simplified construction.  
No brackets for mounting.



Non perforated inner  
baffles.

## Comparison of materials

### Dinex

#### Body

Aluzink. 5 times more corrosion resistant to normal aluminized materials. The lock seaming method that Dinex use is much stronger in the way the material is pressed together.

Height 13,5 mm.

Dinex inlet ID 110 mm.

OE front pipe OD 109 mm.

#### Inside construction

The open area is similar to OE.

Minimum 50% weldings.

### Portuguese competitor

#### Body

Aluminized steel. Lock seam edges are very thin which means a higher risk for break and leakage.

Height 10,5 mm.

Competitor inlet ID 107,5 mm.

OE front pipe OD 109 mm.

#### Inside construction

50% less open area which results in a higher back pressure.

Only spot welding = risk of breaking.

**Dinex A/S (Head Office)**  
Telephone +45 63 41 25 00  
Telefax +45 63 41 25 25  
E-mail [dinex@dinex.dk](mailto:dinex@dinex.dk)  
Homepage [www.dinex.dk](http://www.dinex.dk)

**Dinex Exhausts Ltd.**  
Telephone +44 1925 849 849  
Fax +44 1925 849 850  
E-mail [dinex@dinex.co.uk](mailto:dinex@dinex.co.uk)

**Dinex GmbH**  
Telephone +49 180 225 1125  
Fax +49 665 591 8601  
E-mail [dinex@dinex.de](mailto:dinex@dinex.de)

**Dinex Elma s.a.s.**  
Telephone +33 1 69 11 88 00  
Fax +33 1 69 11 88 01  
E-mail [dinex@dinex.fr](mailto:dinex@dinex.fr)

**Dinex Latvia SIA**  
Telephone +371 302 0200  
Fax +371 302 0059  
E-mail [dinex@dinex.lv](mailto:dinex@dinex.lv)

**Dinex Exhausts, Inc.**  
Telephone +1 626 913 0695  
Fax +1 626 913 9105  
E-mail [enquiries@dinexexhausts.com](mailto:enquiries@dinexexhausts.com)

**Dinex Clamps Ltd**  
Telephone +44 1254 826 000  
Fax +44 1254 826 080  
Email: [re@dinex.co.uk](mailto:re@dinex.co.uk)

**Dinex Italia S.r.l.**  
Telephone +39 085 8028693  
Fax +39 085 8028692  
E-mail [dinex@dinex.it](mailto:dinex@dinex.it)

**Dinex Polska Sp. z o.o.**  
Telephone +48 58 663 1312  
Fax +48 58 663 1314  
E-mail [dinex@dinex.pl](mailto:dinex@dinex.pl)

**Dinex Ibérica S.L.**  
Telephone +34 93 656 81 40  
Fax +34 93 656 01 00  
E-mail [dinex@dinexescape.es](mailto:dinex@dinexescape.es)

**Dinex-Hildebrand GmbH**  
Telephone +49 6324 597-0  
Fax +49 6324 597-222  
E-mail [info@hildex.com](mailto:info@hildex.com)

**Dinex RUS LLC**  
Telephone +7 813 7122802  
Fax +7 813 71 34111

**Dinex Sweden AB**  
Telephone +46 31 77 99 800  
Fax +46 31 77 99 801



Applies for Dinex A/S only